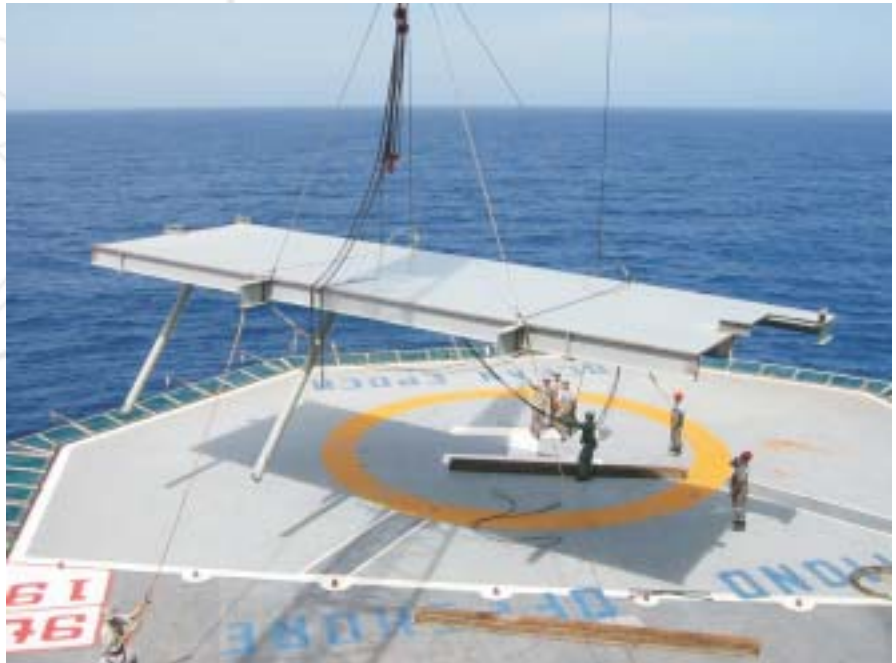


Ocean Epoch Deck Extensions

Diamond Offshore



Aft Port Deck Extension, being lifted off the helideck ready for installation.

Deck Extensions

PROJECT PROFILE

Client:	Diamond Offshore Drilling Inc.
Location:	Ocean Epoch, Bass Strait, Fremantle & On-site NW Shelf
Project Duration:	90 days
Date:	Dec 2003 - Feb 2004
Crew Size:	2 to 16

Due to their 2004 drilling commitments, Diamond Offshore undertook a program to increase the usable deck area onboard the Ocean Epoch.

AME collaborated with AMASE Inc. of Houston Texas, to design and draft three new deck extensions. Project management was performed in-house by **AME**, thus ensuring the timely and efficient coordination of scaffolding, steel fabrication, painting, transportation and installation activities.

AME personnel carried out preparatory works whilst the rig was under tow from Bass Strait to Perth and subsequently from Perth to Dampier. Installation of the decks was undertaken over a three week period (24 hrs/day, 7 days/week), whilst the rig was onsite. As the rig was operational during the installation phase **AME** liaised closely with Diamond Offshore to ensure drilling operations were not interrupted.



(a)



(b)



(c)



(d)



(e)



(f)



(g)



(h)

Photos (a)-(f): Aft Starboard deck lift sequence.

Photo (g): Completed Aft Starboard deck.

Photo (h): Completed Aft Port and Starboard decks as seen from the top of the drill derrick.

Photo (i): Grinding during night-shift.



(i)

AME Pty Ltd

Telephone: +61 8 9240 4115

Fax: +61 8 9240 4116

Email: info@amepl.com.au

Web: www.amepl.com.au