

## Lady Grete ROV Platform

Subsea7



Completed primary steework prior to grating, handrails and equipment fitout.

ROV Platform

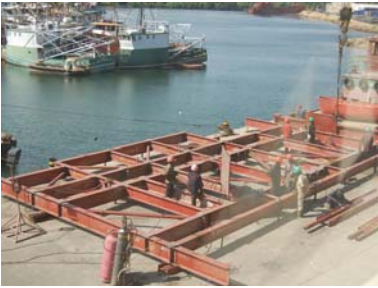
### PROJECT PROFILE

Client:	Subsea7
Location:	MV Lady Grete, Mombasa, Kenya
Project Duration:	3 weeks
Date:	Dec 2006 - Jan 2007

**AME** was engaged by Subsea7 (Perth) to conceptualise, design and fully draft an ROV support structure for the Lady Grete. The deck supported the ROV spread, including an ROV LARS, winch, hydraulic power unit (HPU) and associated 20 foot containers.

As the support platform was being fabricated and installed in Kenya, **AME** reduced fabrication costs and times by collaborating closely with Subsea7 and the local fabricators to provide a fully functional design consisting only of the limited range of locally available steel sections.

**AME** provided a comprehensive calculation package which was independently reviewed and approved by both Farstad and Det Norske Veritas (DNV).



(a)



(b)



(c)



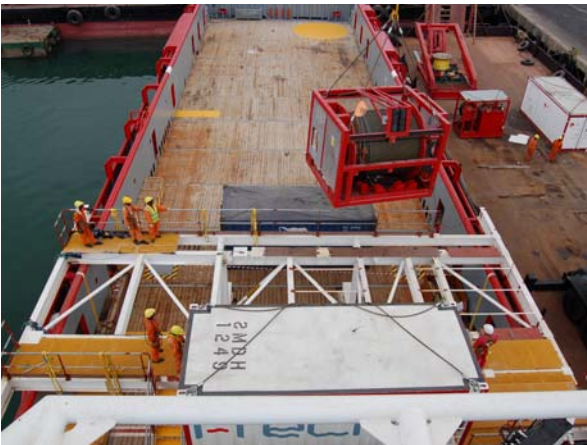
(d)



(e)



(f)



(g)



(h)

Photos (a)-(f): Steelwork being fabricated on the wharf and installed onto the vessel whilst along side in Mombasa.

Photo (g): 23 Tonne hydraulic winch being installed onto steelwork.

Photo (h): Platform prior to LARS loadout.

Photos (i): Fully mobilised platform, prior to vessel departure.



(i)

**AME** Pty Ltd

Telephone: +61 8 9424 4100

Fax: +61 8 9424 4101

Email: [info@amepl.com.au](mailto:info@amepl.com.au)

Web: [www.amepl.com.au](http://www.amepl.com.au)