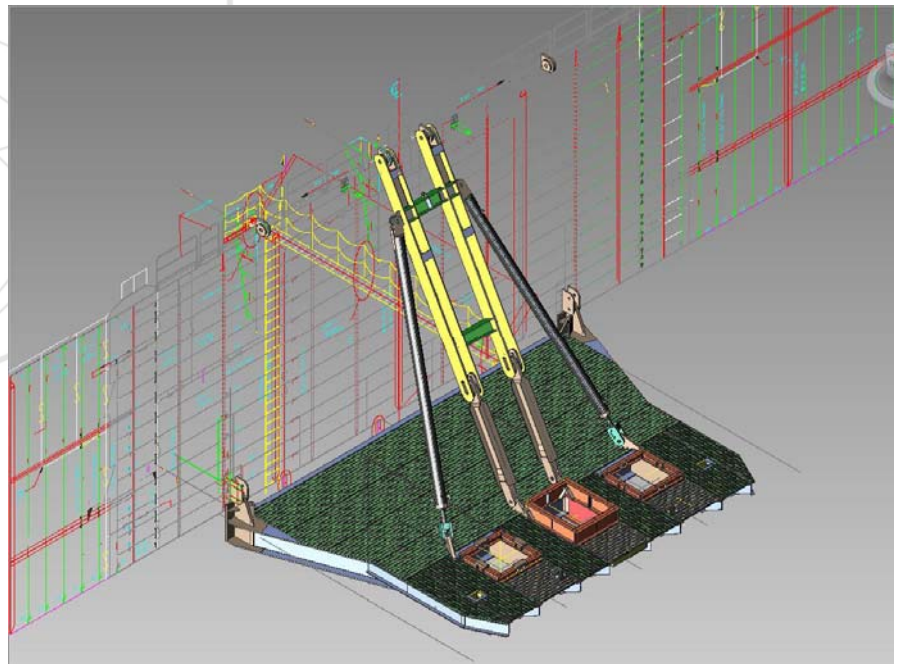


# Conductor Tensioner Deck

Apache Energy Limited



Three dimensional model of Conductor Tensioner Deck.

Conductor Tensioner Deck

## PROJECT PROFILE

Client:	Apache Energy Limited
Scope:	Design and installation services.
Location:	Ensko 106, Offshore, Barrow Island
Project Duration:	15 weeks (Installation: 2 days)
Date:	June 2008 - Sept 2008

As part of the Reindeer field development, Apache Energy's drilling campaign required three conductors to be mounted to their respective tensioner units simultaneously.

Apache engaged **AME** to complete the design, drafting and installation of a unique triple slot conductor tensioner (CT) deck.

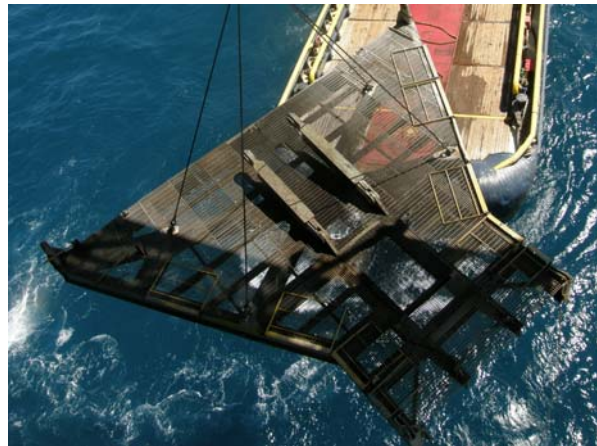
**AME** also completed structural analysis review of the rig transom to verify its suitability for the increased operational loads.

The tensioner deck was required to be easily folded up against the rig transom for transport and certified for an offshore lift during installation.

Due to the increased mass of the new tensioner deck, the rig cranes were not able to handle the structure. **AME's** installation method utilised the rig's 600T capacity draw works to lift the deck directly from the supply vessel beneath the rig.



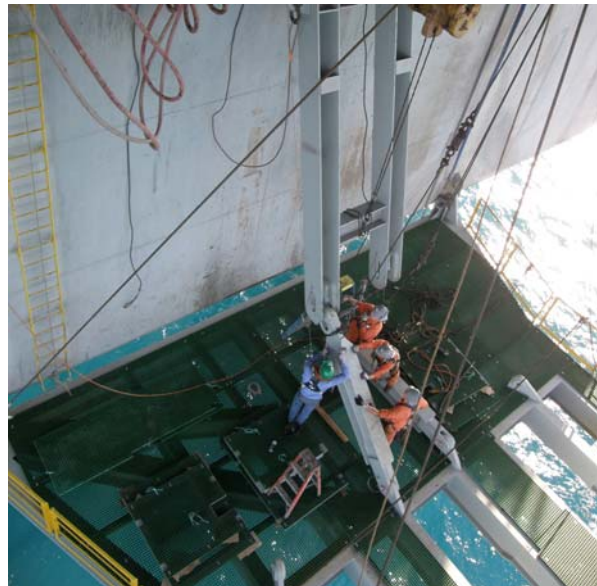
(a)



(b)



(c)



(d)

Photo (a): Fit up and function testing of new CT deck in workshop ,prior to loadout.

Photo (b): Existing CT deck being lowered to supply vessel.

Photo (c): New CT deck being lifted from supply vessel utilising the rig draw works.

Photo (d): Installing supporting members.

Photo (e): Preparing to run drilling template.

**AME** Pty Ltd

Telephone: +61 8 9424 4100

Fax: +61 8 9424 4101

Email: [info@amepl.com.au](mailto:info@amepl.com.au)

Web: [www.amepl.com.au](http://www.amepl.com.au)



(e)