

XT Transport Skid

BHP Billiton Petroleum



35 tonne Subsea Christmas Tree (XT) being lowered onto transport skid during SIT

XT Transport Skid

PROJECT PROFILE

Client: BHP Billiton Petroleum

Project Duration: 3 Weeks

Date: Feb 2009

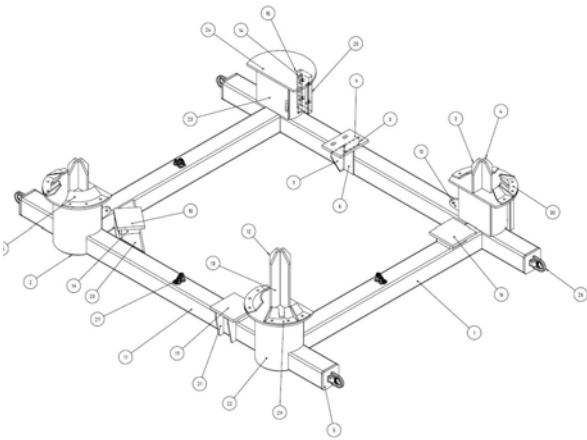
Scope:

- Design and fabrication of 4 transportation skids.
- Seafastening design and transportation vessel deck checks.
- AHT deck layouts and seafastening plan.

The BHP Billiton Pyrenees oilfield development requires the installation of 17 Cameron subsea Christmas Trees (XT's).

AME was engaged to design and fabricate four multipurpose transportation skids that would allow the XT's to be:

- a) Transported from Perth to the Dampier supply base via low loader road train.
- b) Seafastened and transported onboard an Anchor Handling Tug (AHT) to the Ocean Epoch drill rig.
- c) Lifted safely with the transportation skid (as a single unit), in order to provide a means of landing the XT's on the Ocean Epoch's pipe deck.
- d) Skidded along the Ocean Epoch's cellar deck utilising the rig's hydraulic skidding system.



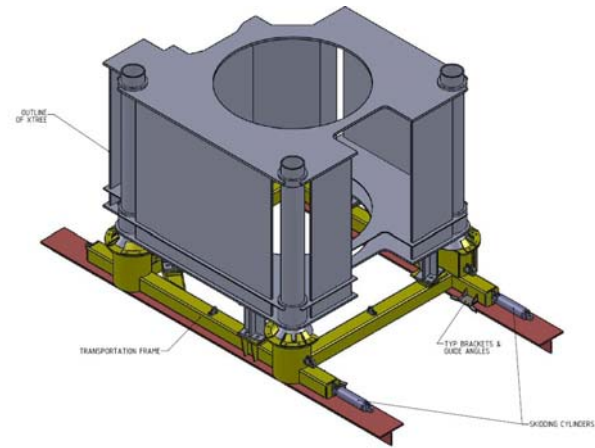
(a)



(b)



(c)



(d)

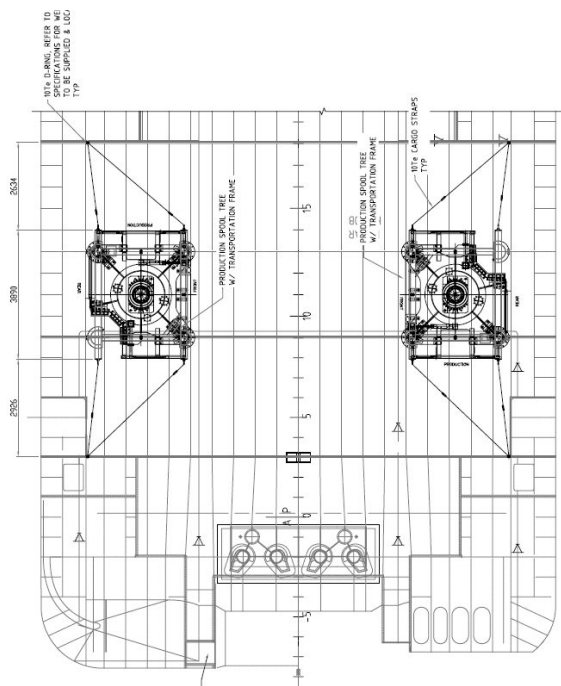
Drawing (a): Isometric drawing of transportation skid

Photo (b): Transportation skid secured to XT guide wire funnels and being lifted with XT during SIT

Photo (c): Completed transportation skids prior to loadout.

Drawing (d): The **AME** XT transport skid was designed to interface with the with the Ocean Epoch's skidding system. This eliminated the need for a dedicated RSA (Running Skid Assembly)

Drawing (e): AHT seafastening plan.



(e)

AME Pty Ltd

Telephone: +61 8 9424 4100
 Fax: +61 8 9424 4101
 Email: info@amepl.com.au
 Web: www.amepl.com.au